

CFD

High speed compressible flow modeling

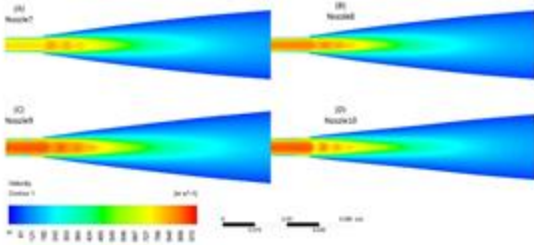
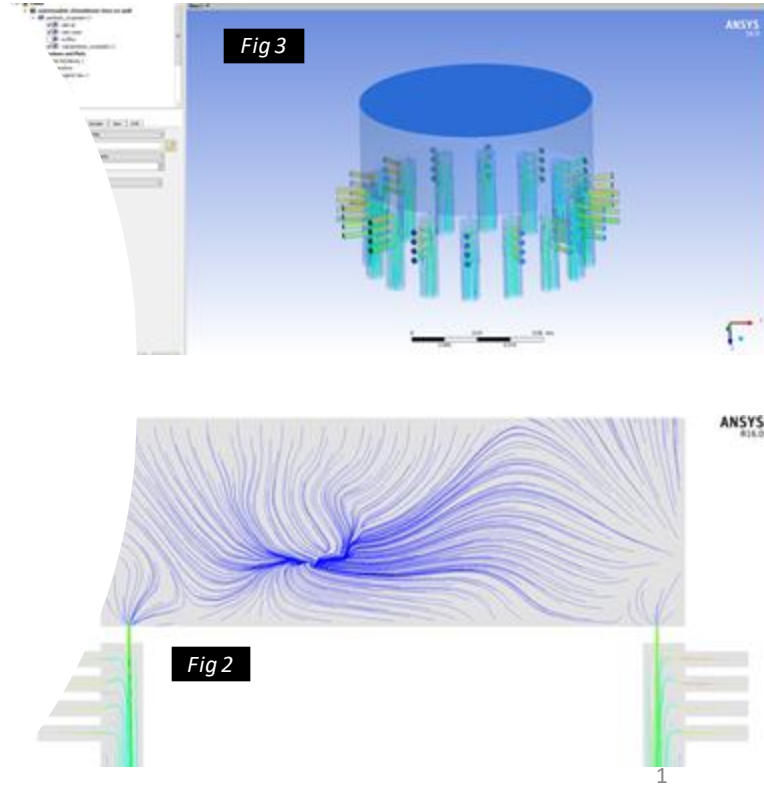


Figure 5: Gas velocity contours (X-Y plane, clipped >200m/s) at nozzle exit indicating the operating modes of the nozzle from perfectly expanded to overexpanded regimes (A to D)

Varadaraajan, V., & Mohanty, P. (2017). Design and optimization of rectangular cold spray nozzle: radial injection angle, expansion ratio and traverse speed. *Surface and Coatings Technology*, 316, 246-254.



Combined air + water simulation for thermal applications

FEA and CFD

Conjugate heat transfer analysis rotating mesh

Fig 1

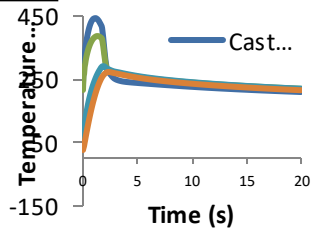


Fig 3



Fig 4

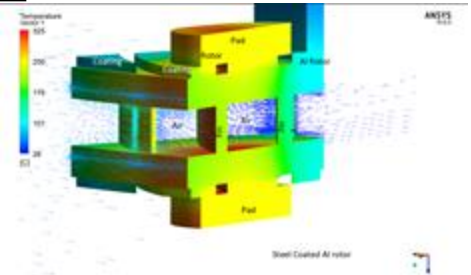


Fig 2

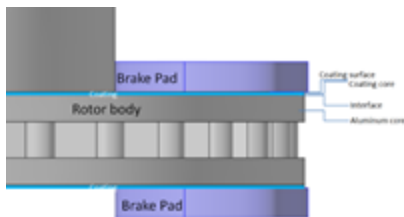
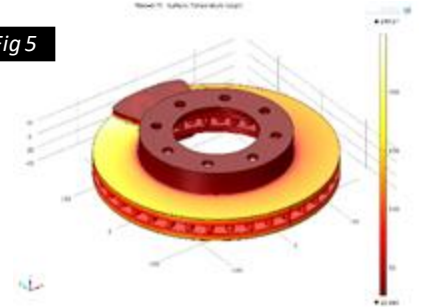
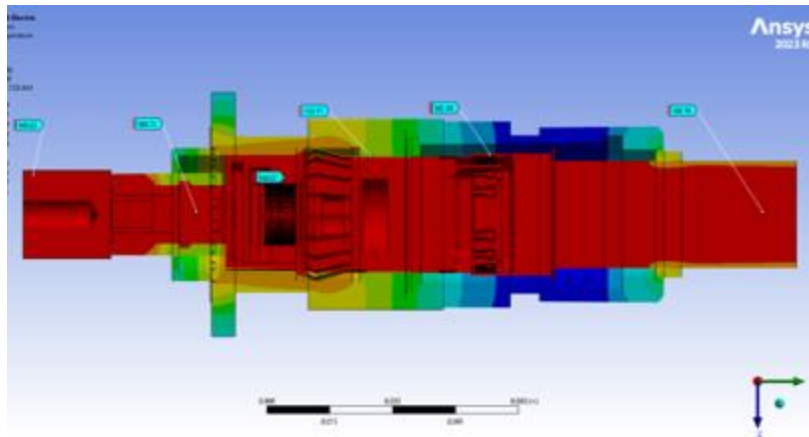


Fig 5



Connection systems design

This coupled structural - thermoelectric simulates the connector and current flow in assembled state



LFA development

During Covid, I volunteered for the bio-medical team at U of M to determine fluid/drug diffusion through test strips (lateral flow assays) done using Comsol (richardson darcy flow)

